



HONGQI



DRIVEN BY HERITAGE,  
LEADING TOMORROW

# Hongqi, A Legacy Deepened by Time

Est.1958 | Over Six Decades of Excellence

We have been rooted in the automotive field for over sixty years, carrying the founding spirit of China's national automobile industry and standing as a cultural symbol for generations.

**1958**

In 1958, the first Hongqi premium sedan was produced.



**1960**

In 1960, Hongqi sedans debuted at Leipzig Fair and Geneva Motor Show, becoming a global luxury icon.



**1970**

In 1970, Prince Norodom Sihanouk rode in a Hongqi CA72 convertible.



**1996**

In 1996, the Hongqi sedan became the designated vehicle for national-level government events.



**2021**

In 2021, Hongqi E-HS9 exported to Europe.



**2024**

In 2024, the King of Malaysia officially became the first global honorary owner of Hongqi L5.



**2025**

In 2025, Hongqi Golden Sunflower global pre-sales began in Abu Dhabi.



# Shaping mobility for your world

Elegant



In design, Hongqi's smooth, dignified, grand and refined lines convey oriental elegance.

Leading



In technology and craftsmanship, Hongqi leads globally by integrating intelligent driving, new energy and masterful manufacturing to redefine luxury engineering.

Reliable



In craftsmanship and aftersales care, Hongqi delivers confidence, reliability, and trust throughout ownership.



## A commanding presence of eastern luxury

The Hongqi E-HS9 inherits the core brand philosophy of "Harmony & Trust," combining luxury, comfort, and a serene experience for both business and family use. It is designed to cater to a diverse range of lifestyles.

Disclaimer: The products shown are based on the current version, and specifications may vary by region.



Waterfall Grille | Intelligent Matrix LED Headlight | 21-inch Five-spoke Two-tone Alloy Wheels | Hongqi Classic Chrome-plated Side Flag Badge  
Smart Display C-pillar (Integrated Charging Indicator) | Full-width Taillights

Disclaimer: The products shown are based on the current version, and specifications may vary by region.



The E-HS9 pursues symmetrical aesthetics and adopts the golden ratio. The front fascia is powerful and majestic, the side profile stands tall and upright, the overall design is dignified and striking, the side profile upright and elegant, creating a dignified and striking overall design.

## Meeting your high expectations of quality

The E-H59 perfectly blends an executive-level commanding presence with a high-tech electric driving experience.

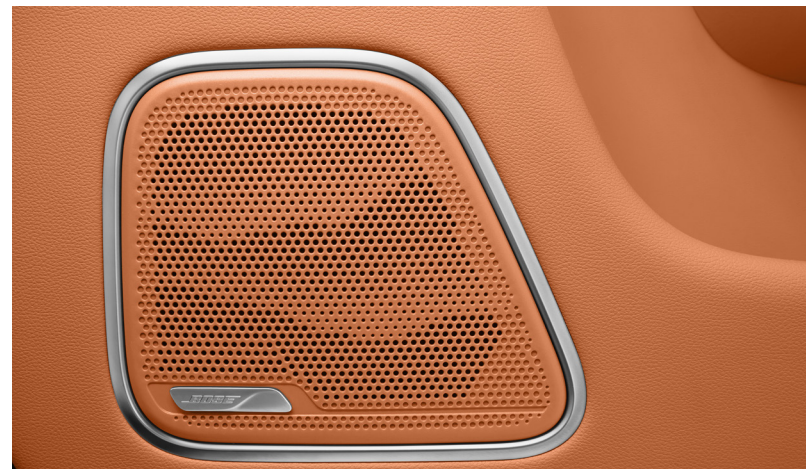
The leather-wrapped surfaces showcase a premium texture, while the triple-screen interactive design and ambient lighting with 256 adjustable tones highlight a high-tech atmosphere.

Disclaimer: The products shown are based on the current version, and specifications may vary by region.

# A surprisingly versatile and luxurious space



Four-zone automatic climate control



BOSE Centerpoint® Surround Sound System

Disclaimer: The products shown are based on the current version, and specifications may vary by region.



The E-H59 adopts a 2+2+2 large six-seat layout, equipped with aviation-grade multi-function seats (including electric adjustment, massage, ventilation, and memory functions), a 1.8 m<sup>2</sup> panoramic sunroof, and soundproof glass for the whole vehicle. With executive-level NVH performance, it provides a private communication space for you and your guests.



Inheriting decades of safety expertise,  
always putting safety first.

## Trusted full-coverage protection

The E-HS9 integrates four major safety systems: body safety, driving safety, battery safety, and anti-theft safety. It also features a baby and mother friendly healthy cabin, leveraging robust technology and strict standards to deliver on the promise of worry-free mobility across all driving scenarios.

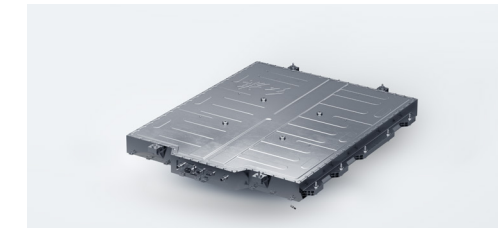
Disclaimer: The products shown are based on the current version, and specifications may vary by region.



Body safety: 9H ltra-high-strength architecture



Driving safety: Full dimensional active safety system



Battery safety: Uniquely designed side battery protection, IP68 protection, 1500-cycle battery life and an industry first Power Battery Fire Suppression Technology.



Anti-theft safety: Physical and electronic anti-theft systems, APP remote monitoring



Baby and mother friendly healthy cabin: PM2.5 pollen filtration system, natural eco-friendly materials, for a fresh and clean breathing environment.

## Worry-free driving technology

Equipped with a large capacity 120kWh ternary lithium battery, paired with an efficient electric motor control system and an energy recovery system, The E-HS9 achieves a WLTC range of 548 km, freeing your travels from range limitations.



Disclaimer: The products shown are based on the current version, and specifications may vary by region.

## Conquers all roads with proven capability

The E-HS9 is equipped with an Electric Intelligent Four-Wheel drive system, accelerating from 0 to 100 km/h in just 5.5 seconds. With 7 all scenario driving modes, air suspension, IDCS shock absorber, and speed sensitive power steering, it delivers millisecond level driving control response, allowing you to experience a harmonious and effortlessly controlled driving experience.



Ventilated disc front brake+ Ventilated disc rear brake



Dual-motor electric all-wheel-drive system

# An elevated welcome experience



Pop-Out Hidden Door Handle



Illuminated LED Scuff Plate



Welcome Light On Exterior Rearview Mirror

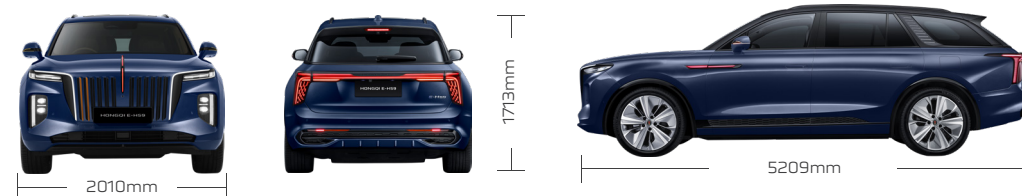
Disclaimer: The products shown are based on the current version, and specifications may vary by region.

## Product Configuration

E-HS9 Overseas RHD Equipment Definition (Long-endurance Southeast Asian version)		
<b>Seat</b> <ul style="list-style-type: none"> <li>Electrically adjustable functions of the driver's seat and front passenger seat (8 modes of the driver's seat, 6 modes of the passenger seat.)</li> <li>Memory function of driver's seat and front passenger seat</li> <li>Manual seat depth adjustment of driver's seat and passenger seat</li> <li>Ventilation and massage functions of driver's seat and front passenger seat</li> <li>4 manually adjustable headrest functions of front seat</li> <li>Electrically adjustable functions of second-row seats (4 modes)</li> <li>Ventilation function of the second-row seats</li> <li>4-position headrest adjustment function of the second-row seats</li> <li>Second-row seats integrated with 2 sets of upper and lower fixed points for child seats</li> <li>Electrically foldable backrest of the third-row seats</li> </ul>	<ul style="list-style-type: none"> <li>Rear combination light</li> <li>High-end daytime running light</li> <li>Corner light</li> <li>Front grille breathing light</li> <li>In-car reading light</li> <li>C-pillar light</li> <li>Atmosphere light mode selection</li> <li>Welcome/VIP/exit light</li> <li>Welcome light on exterior rearview mirror</li> <li>Illuminated LED scuff plate</li> <li>Delayed closing at night</li> <li>Sequential turn signal (rear lights only available)</li> </ul>	<b>Key/car lock</b> <ul style="list-style-type: none"> <li>Auto-locking doors when driving</li> <li>Rear door electronic child lock</li> <li>Keyless entry</li> <li>Keyless start</li> <li>Key-activated light, voice response</li> <li>Key remote control to close car windows</li> <li>Key remote control to open trunk</li> <li>Vehicle electronic anti-theft system</li> <li>Interior central lock</li> <li>Intelligent entry</li> <li>Intelligent locking</li> <li>Walk-Away auto lock</li> </ul>
<b>Refuelin</b> <ul style="list-style-type: none"> <li>Charging port (DC+AC integrated) (Right rear side)</li> <li>Charging reservation management</li> </ul>	<b>Car door</b> <ul style="list-style-type: none"> <li>Pop-out hidden door handle</li> <li>Electric trunk (with memory function)</li> <li>Anti-pinch function for tailgate</li> <li>Electric suction door</li> </ul>	<b>Air conditioner</b> <ul style="list-style-type: none"> <li>Automatic air conditioner control</li> <li>Four temperature zone air conditioner</li> <li>Air conditioner rear control function</li> <li>B-pillar air vent</li> <li>Second-row air vent</li> <li>Heat pump air conditioner</li> <li>PM 2.5 filter</li> <li>Pollen filtration</li> <li>External &amp; Internal temperature sensor</li> <li>Interior humidity sensor</li> <li>Sunshine sensor</li> </ul>
<b>Chassis</b> <ul style="list-style-type: none"> <li>Brake energy recovery system</li> <li>7 driving modes</li> <li>Ultimate driving mode</li> <li>Drive mode-responsive HMI &amp; ambient light</li> <li>Acoustic vehicle alerting system</li> <li>Electric power steering</li> <li>IDCS shock absorber</li> <li>Air suspension</li> <li>Entry/exit leveling function</li> <li>Tire repair tools</li> <li>Electronic parking brake</li> <li>Direct tire pressure monitoring device</li> <li>Anti-lock braking system (ABS)</li> <li>Electric brakeforce distribution (EBD)</li> <li>Hydraulic braking assistance (HBA)</li> <li>Traction control system (TCS)</li> <li>Electronic stability program (ESP)</li> <li>Controlled deceleration for parking (CDP)</li> <li>Auto vehicle hold (AVH)</li> <li>Hill hold control (HHC)</li> <li>Change to Roll-Over Mitigation (ROM)</li> <li>Hill descent control (HDC)</li> </ul>	<b>Steering wheel</b> <ul style="list-style-type: none"> <li>Electric steering wheel adjustment</li> <li>Automatic steering wheel adjustment</li> <li>Steering wheel wrapped in genuine leather</li> <li>Memory function for steering wheel positions</li> </ul>	<b>Safety</b> <ul style="list-style-type: none"> <li>Driver's seat airbag</li> <li>Front passenger seat airbag</li> <li>Front airbag</li> <li>Rear airbag</li> <li>Front/rear head airbag (air curtain)</li> <li>Front pre-tensioning force-limiting seat belt</li> <li>Second-row pre-tensioning force-limiting seat belt</li> </ul>
<b>Smart driving</b> <ul style="list-style-type: none"> <li>L2.0 level intelligent driving</li> <li>Speed warning based on TSR (traffic sign recognition)</li> <li>Braking/active safety system</li> <li>Anti-collision warning</li> <li>Blind spot detection</li> <li>Rear cross-traffic alert when reversing</li> <li>Lane departure warning system</li> <li>Lane keeping assist (LKA)</li> <li>Lane change assist</li> <li>Camera occlusion warning</li> <li>Smart adaptive cruise control (SACC)</li> <li>Traffic sign recognition</li> </ul>	<b>Audio</b> <ul style="list-style-type: none"> <li>BOSE® brand sound system equipped with 16 speakers</li> </ul>	<b>External configuration</b> <ul style="list-style-type: none"> <li>Active closed intake grille</li> <li>Panoramic sunroof</li> <li>Rain-sensing wiper</li> <li>Rear wiper</li> <li>Adjustable headlight height</li> </ul>
<b>Light</b> <ul style="list-style-type: none"> <li>Matrix intelligent full LED headlight</li> <li>Automatic light</li> <li>Intelligent light (such as intelligent high beam)</li> </ul>	<b>Glass/interior and exterior rearview mirrors</b> <ul style="list-style-type: none"> <li>Soundproof glass for the whole vehicle</li> <li>UV resistant/insulated glass</li> <li>One-touch power windows for all doors</li> <li>Anti-pinch function for all car windows</li> <li>Exterior rearview mirror function (Electric adjustment / Auto-tilting when reversing / Power-folding / Auto-folding when locking the car / Heated / Position memory)</li> <li>Auto-dimming internal rearview mirror</li> </ul>	<b>Internal configuration</b> <ul style="list-style-type: none"> <li>Electric adjustment of sunroof sunshade</li> <li>Second-row 12V power supply</li> <li>12V power supply in the trunk</li> <li>Second-row cup holder</li> <li>Rear seat folding switch in the trunk</li> <li>Intelligent lighted makeup mirror with LED lighting</li> <li>Pre-wired interface for dash cam</li> <li>Front 2 mobile phone wireless chargers, charging power 50W</li> </ul>
		<b>Smart cockpit</b> <ul style="list-style-type: none"> <li>8.88 inch instrument screen + 15.6 inch central + 15.6 inch front passenger screen</li> <li>HMI boot animation</li> <li>Multi-screen interaction</li> <li>In-vehicle system language (Chinese/English/Thai/Malay/Indonesian)</li> <li>FM function</li> <li>Panoramic view image</li> <li>Convenient entry/exit system for driver's seat</li> <li>Car bluetooth</li> <li>Mobile car connectivity (Carplay®, Android Auto)</li> <li>Online music (Spotify)</li> <li>Online navigation (Standard Equipment: South-east Asia map package, Optional Equipment: Hong Kong &amp; Macau map package)</li> <li>Online video (YouTube)</li> <li>Multi-device seamless transfer function</li> <li>4G network</li> <li>Car Wi-Fi hotspot</li> <li>Natural voice control (Chinese/English/Thai)</li> <li>Car wash mode</li> <li>Camping mode</li> <li>Pet Mode</li> <li>OTA (Singapore, Thailand, Malaysia) - (HongKong, Macau OTA feature removed)</li> <li>E-CALL</li> <li>Remote vehicle control via phone (Remote door unlock, Remote window control, Remote charging management, Vehicle location tracking, Vehicle status monitoring, Remote air conditioning control)</li> </ul>

\*Remark: Due to local regulations, privacy glass is equipped in Thailand, Malaysia, and Macau; Hong Kong and Singapore region models use non-privacy glass.  
 \*Optional package: SIM card optional package (ESIM Card)

## Dimensions



## Body Colors



## Seat Upholstery



## Technical Specifications

Car body	
Total length (mm)	5209
Total width (mm)	2010
Total height (mm)	1713
Wheelbase (mm)	3110
Curb weight (kg)	2636
Maximum full load mass (kg)	3146
Approach angle (°)	21.3
Departure angle (°)	21.4
Minimum ground clearance (mm)	175
Rear trunk volume (L)	255-1747
Drag coefficient (Cd)	0.326
Single-side roof rack(kg)	≤ 35

PE System (Power Electric System)	
Battery type	Ternary lithium battery
Battery capacity (kWh)	120
Electric drive selection	Front M190-150 with disconnect+rear M160
Motor type	Permanent magnet synchronous motor
Total motor power	202kw+160kw
Maximum torque	306Nm+300Nm
Voltage platform	400V
Fast charging power (kw)	140
0-100km/h acceleration time (s)	5.5
10% -80% fast charging time (min)	48
Maximum speed (km/h)	200
Pure electric range under CLTC (km)	760
Electric consumption under WLTC condition (km/100km)	23.2
Drive type	Intelligent electric four-wheel drive

Other	
Number of Seats	6
Suspension	Double wishbone independent suspension + Trapezoidal arm independent suspension
Brake	Ventilated disc front brake + Ventilated disc rear brake
Front/Rear Tire brand and Specification	MICHELIN® 265/45 R21